

GC Series Counting Scales

Understand and Benefit from Key Features of the GC Series

1. Internal Memory

Store and recall 1000 items from GC internal memory using a unique ID number you assign.

Abbrev.	Function	Description	Tips and Tricks
ID	identification #	6-digit unique ID, up to 1000 items internally	Use the last 6 of the bar code
IC	item code	alpha-numeric item label	20-character max, optional- only ID required
UW	unit weight	average piece weight	Use ACAI to refine / improve
AIS	auto ID search	finds similar weight items	GC offers a list- you choose

2. Additional External Memory



3. Move product data easily from spreadsheet to the GC

	A	B	C
1	32076003258	Cable straps	1.27
2	686046510842	Sheet metal screws	1.2526
3	764666164253	Roofing nails	0.793

Save, transfer and load your data in standard .CSV format. Easily manage data with WinCT-Counting free utility. See page 3.

4. AIS- Automatic Item Search recalls a unit weight close to the current weighing value by searching memory. Identify items without remembering the item ID.

Place one sample on the pan, the GC searches and calls up a value similar to the current weight.

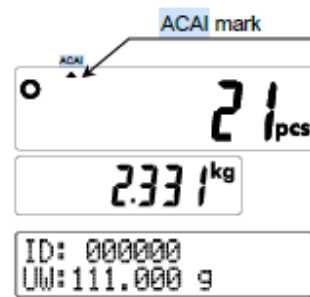
- With internal memory, 10 items within ~5% of the weight become candidates
- With SD memory, all weights within ~ 5 % of the weighed are offered up as candidate.

5. How low can you go?

Get better control of fine variations in your piece weights with the high internal resolution of the GC.

Model	Display Resolution	Internal Resolution
GC-3K	6,000	1,000,000
GC-6K	6,000	1,000,000
GC-15K	7,500	1,000,000
GC-30K	6,000	1,000,000

6. ACAI – Automatic Counting Accuracy Improvement mitigates variations in individual piece weight



7. Extend the precision even further by pairing with an A&D balance.



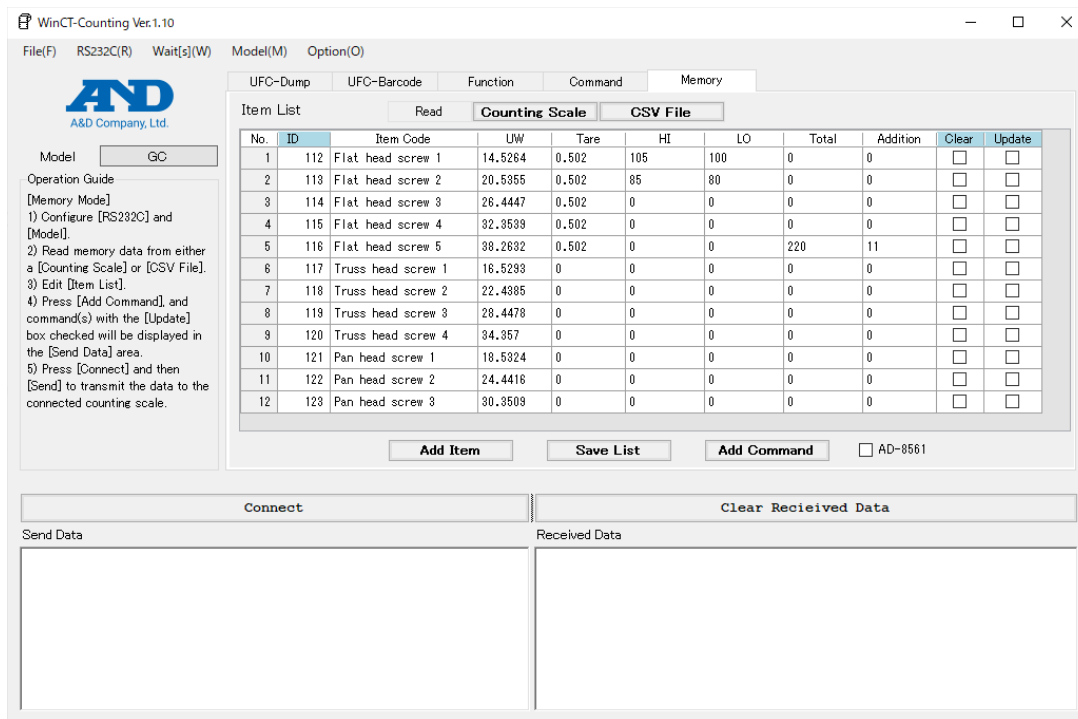
8. AD-8561-MI series of Multi-Interface accessories extends capacity and capabilities of the GC.



Model		Equipped with	Use with
AD-8561	Common	RS-232C (D-sub 9-pin) × 1	Printer/PC (bi-directional)
		USB (Type-A) × 1	Barcode scanner/keyboard input
	MI02	USB (Type-micro B) × 1	PC (bi-directional)
	MI04	Terminal (4-pin) block × 1	Comparator relay output
	MI05	Terminal (7-pin) block × 1	External scale (load cell) input

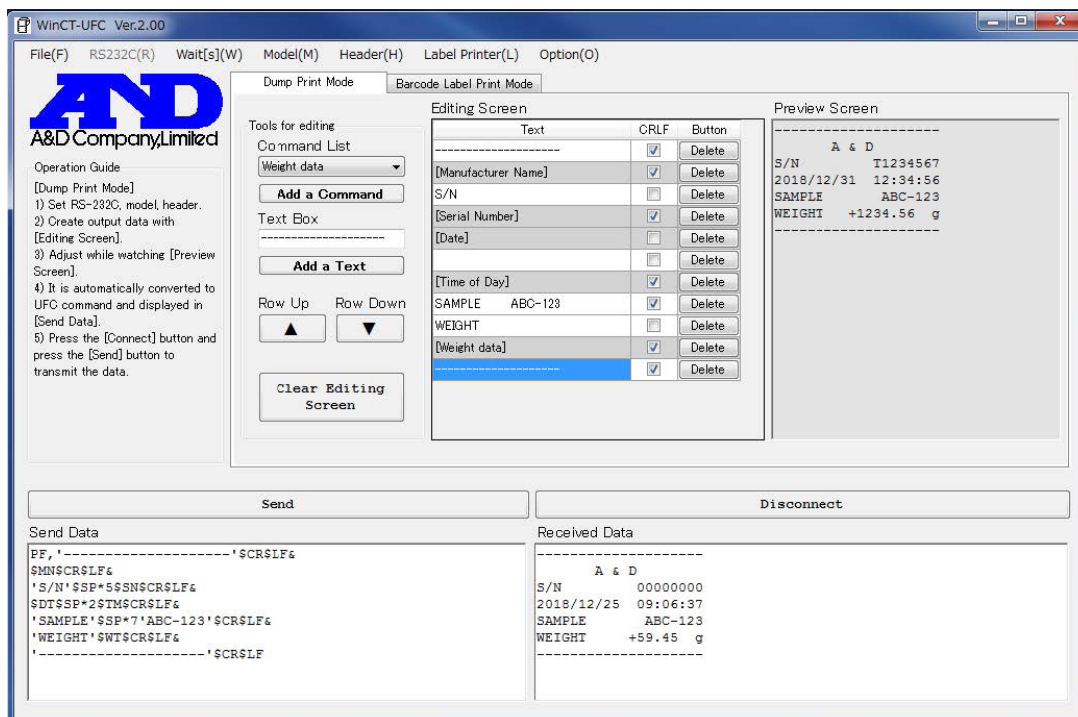
Add additional productivity by adding bar code scanners, printers and remote bases.

9. WinCT-Counting brings efficiency to GC set-up and data transfer.



Set, confirm and save scale settings conveniently on your PC, then transfer to the GC. Transfer item list data in .csv format directly from your PC.

10. Win-CT UFC enables users to customize printout content and layout by editing and sending commands to the scale.



Design and print labels, including 3 types of one-dimensional/two-dimensional barcodes: QR, Data Matrix, and Code 39.



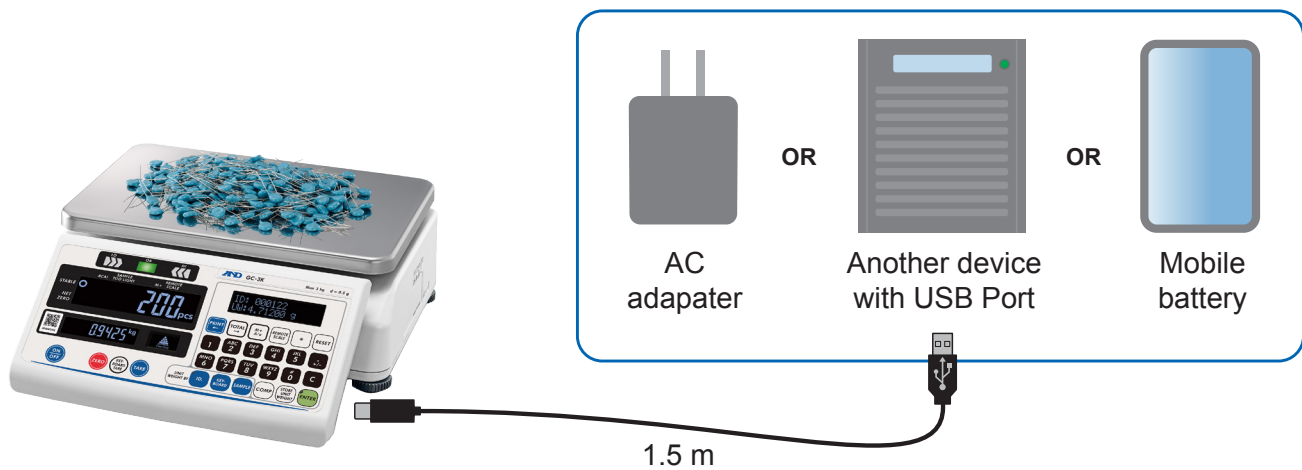
UFC works with industry-standard printers which support EPL/ZPL

11. Designed to be flexible and portable.



Take pick-and-pack counting into your warehouse. The AD-8561 can be mounted as shown, with accessories keeping cables neat and the system ready-to-go.

12. Choose the best power for your application: AC adapter for bench-top use, or with a USB power pack to go mobile on a cart.



With a 5000 mAh power pack, you'll get about 24 hours of GC use.
With a 10,000 mAh pack, you'll more than enough to power an entire 40-hour work week.