



Series FS06 force sensors measure tension and compression forces. Designed to accommodate bulkier grips and fixtures, they are compatible with Series F test frame models up to 500 lbF / 2.2 kN.

With Plug & Test® technology, all configuration and calibration data is saved within the sensor, allowing it to be calibrated on the test frame or off-site with a Mark-10 indicator (optional adapter AC1083 required).

Ranges are available from 50 to 500 lbF [250 N to 2.5 kN].

Compatible with Models F105, F305, F505, and F505H.



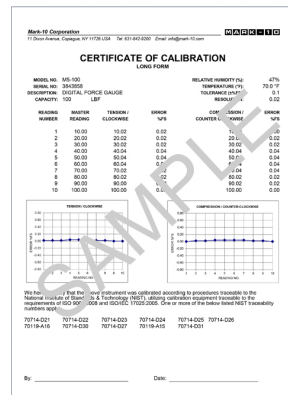
Specifications

| | |
|-----------------------|---|
| Accuracy: | ± 0.15% of full scale + indicator or test frame |
| Safe Overload: | 150% of full scale |
| Weight: | FS06-50 - FS06-200: 1.7 lb [0.8 kg] FS06-300 - FS06-500: 1.9 lb [0.9 kg] |

Features

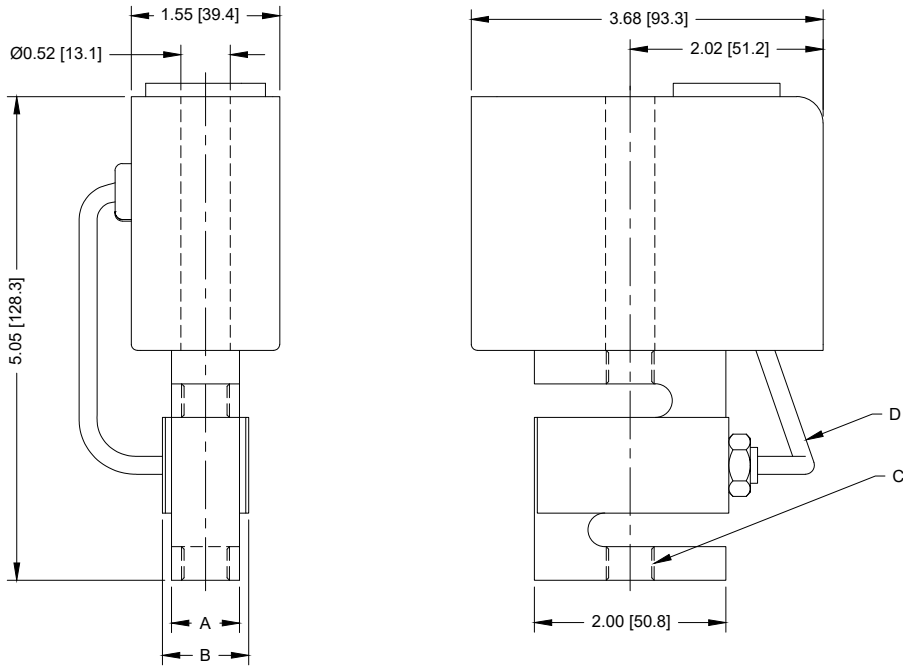


- Series FS06 sensors are suitable for bulkier grips and fixtures, such as the G1095 bend fixture and eye end adapter shown here.



- Included certificate of calibration contains 10 data points in each measuring direction.

Dimensions in [mm]



| Model No. | A | B | C | D |
|-----------|----------------|----------------|---------------|--------------|
| FS06-50 | | | | 6 [152.4] |
| FS06-100 | 0.46 [11.7] | 0.71 [18.0] | 1/4-28 UNF | |
| FS06-200 | | | | |
| FS06-300 | 0.90 [22.6] | 1.10 [27.9] | 1/2-20 UNF | |
| FS06-500 | | | | |

In The Box

Series FS06 are shipped as shown below:

FS06-50 - FS06-200

- (1) Force Sensor
- (1) 1/4-28 x 3 3/4" Screw
- (1) 1/4" Washer
- (1) 1/4-28 Bushing

FS06-300 - FS06-500

- (1) Force Sensor
- (1) 1/2-20 x 3 3/4" Screw
- (1) 1/2" Washer

Capacity x Resolution

| Model No. | lbF | ozF | gF | kgF | N | kN | mN |
|-----------|------------|-----------|------------|------------|------------|--------------|----|
| FS06-50 | 50 x 0.02 | 800 x 0.5 | 25000 x 10 | 25 x 0.01 | 250 x 0.1 | - | - |
| FS06-100 | 100 x 0.05 | 1600 x 1 | 50000 x 20 | 50 x 0.02 | 500 x 0.2 | - | - |
| FS06-200 | 200 x 0.1 | 3200 x 2 | - | 100 x 0.05 | 1000 x 0.5 | 1 x 0.0005 | - |
| FS06-300 | 300 x 0.1 | 4800 x 2 | - | 150 x 0.05 | 1500 x 0.5 | 1.5 x 0.0005 | - |
| FS06-500 | 500 x 0.2 | 8000 x 5 | - | 250 x 0.1 | 2500 x 1 | 2.5 x 0.001 | - |