



Series E push / pull force gauges make job task analysis and ergonomics analysis simple and accurate, ideal for workplace design, strength assessment, and ergonomic studies. Series E presents the ergonomist and other professionals with a simple and economical testing solution. 100 lbF, 200 lbF and 500 lbF (500, 2,500, and 5,000 N) capacity force gauges are available, along with a wide range of attachments for various applications.

Select a pre-configured kit, including a gauge, accessories, and carrying case, or select each item individually to suit particular needs.

Features & Specifications

- Measure real time and peak push and pull forces
- Three measuring ranges: 100, 200, and 500 lbF (500, 1000, and 2,500 N)
- Accuracy: $\pm 0.2\%$ of full scale
- Sampling rate: 7,000 Hz
- USB data output
- High / low limit indicators, for pass / fail and minimum force testing
- Averaging mode calculates average force over a period of time
- 5,000-point data memory - data points may be saved individually or logged continuously at up to 7,000 Hz. Data points may be bulk downloaded to included MESUR™ Lite data collection software.
- Statistical calculations for saved data points
- Includes an AC adapter/charger, rechargeable battery, MESUR™ Lite software, MESUR™ gauge 90-day trial, USB cable, USB driver, carrying case, and NIST-traceable certificate of calibration with data



Attachments click and lock into place via innovative Click-Lock™ technology, a rugged anti-rotation locking mechanism. The attachments may be clicked into 90° or 180° orientations. No fastening is required, as with conventional force gauges, reducing the risk of damage to the instrument.



Capacities & Resolutions

Model	lbF	ozF	kgF	gF	N	kN
ME-100	100 x 0.05	1600 x 1	50 x 0.02	50000 x 20	500 x 0.2	-
ME-200	200 x 0.05	3200 x 1	100 x 0.02	-	1000 x 0.2	1 x 0.0002
ME-500	500 x 0.1	8000 x 2	250 x 0.05	-	2500 x 0.5	2.5 x 0.0005

Force gauges include 110V AC adapters. Add suffix 'E' for Euro plug, 'U' for UK plug, or 'A' for Australian plug.

Ex: ME-100E, ME-200U, ME-500A

Select individual accessories or pre-configured kits



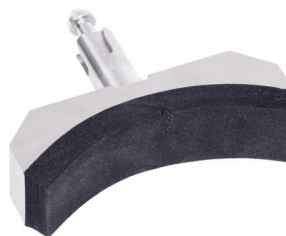
Accessories

Rectangular Pad E1003



- Pad dimensions:
4.0 x 1.0 x 0.5 in.
[102 x 25 x 13 mm]

Curved Pad E1004



- Pad dimensions:
1.0 in. [25 mm] deep
3.2 in. [81 mm] radius
0.5 in. [13 mm] thick

Square Pad E1002



- Pad dimensions:
1.0 x 1.0 x 0.5 in.
[25 x 25 x 13 mm]

Circular Pad E1005



- Pad dimensions:
3.0 in. [76 mm] dia.,
0.5 in. [13 mm] thick

Clasp Hook E1006



- Snap clasp, for added safety
- Swiveling action ensures proper alignment

Chain / Hook Assembly E1007



- Includes E1006 hook and chain
- Chain length: 5 ft (1.5 m)

Single Handle Grip E1008



- Ergonomic rubber-padded handle for a secure grip
- Attaches to force gauge via included thumb screws

Double Handle Grip E1009



- Ergonomic rubber-padded handles, for a secure grip
- Attaches to force gauge via included thumb screws

Pistol Grip E1010



- Ergonomic design for a secure grip
- Attaches to force gauge via included thumb screws

Standard Grip Adapter E1011



- Adapts other Mark-10 grips via 5/16-18F thread
- Includes male/male stud with jam nuts

Looped Cable E1012



- Braided stainless steel
- 43 in. [1,092 mm] length

Myometer Accessory E1013



- Includes tabletop mounting kit for force gauge, strap, and mounting screws. Hook not included.



Small Carrying Case E1000



- Shown populated with optional accessories.
- The following page lists the components compatible with each carrying case.










Large Carrying Case E1001



- Shown populated with optional accessories.
- The following page lists the components compatible with each carrying case.

Series EKE Kits - Included Items



	Model No.	Description	Advanced Kits ¹	Professional Kits ¹
			EKE-100-1 / EKE-200-1 / EKE-500-1	EKE-100-2 / EKE-200-2 / EKE-500-2
              	ME-100 ME-200 ME-500	Force gauge, 100 lbF / 500 N Force gauge, 200 lbF / 1,000 N Force gauge, 500 lbF / 2,500 N	✓	✓
	E1002	Padded attachment, square	X	✓
	E1003	Padded attachment, rectangular	✓	✓
	E1004	Padded attachment, curved	✓	✓
	E1005	Padded attachment, circular	X	✓
	E1006	Clasp hook	✓	✓
	E1007	Chain / clasp hook assembly	X	✓
	E1008	Single handle grip	X	✓
	E1009	Double handle grip	✓	✓
	E1010	Pistol grip	X	✓
	E1011	Grip adapter	X	X
	E1012	Looped cable ²	X	X
	E1013	Myometer accessory ²	X	X
	E1000	Carrying case, small	✓	X
	E1001	Carrying case, large	X	✓

1. Kits include a force gauge with 110V AC adapter. Add suffix 'E' for Euro plug, 'U' for UK plug, or 'A' for Australian plug. Ex: EKE-100-1E
2. Does not fit into carrying case pockets.